



# ANNUAL REPORT 2023-2024



**DIGNITY IN CARE**  
*"Because I am worth it"*

# EDITORIAL



Dear Friends,

Lebanon is stuck in a socio-economic and financial crisis, worsened by political paralysis, inflation, and a severe economic downturn, as noted by Mr. Jean-Christophe Carret, Regional Director of the World Bank for the Middle East. Despite these challenges, including the war at our borders, we have persevered in fulfilling our mission, as shown in this action report.

However, I would like to highlight some key points:

Operationally, we have continued with 3 days of in-person attendance and 2 days of remote, a strategy in its third year. This approach has reduced our costs by about 40%, bringing us closer to budgetary balance while maintaining essential care for our children and youth with disabilities, as well as support for their parents.

This achievement would not have been possible without:

- The extraordinary dedication of our team, who continued to give their best despite halved salaries and heavier workloads due to resignations.
- Strengthened partnerships with families, who supported us according to their means and networks.
- The tireless efforts of our volunteer women's committees, who supported our children and their parents.
- An unshakable faith in Set El Beit and in the humanity created in God's image.

This year has been full of significant achievements, including:

- An environmental and sustainable development project, where our children actively participated in raising awareness about water conservation through the "Every Drop Counts" initiative.
- SESOBEL supported two youth groups in establishing associations: one for those with neuromuscular diseases (registered June 27, 2024, no. 813) and another for cerebral palsy, still in progress. These associations aim to raise awareness and provide a platform for exchange, training, lobbying, and fundraising.
- SESOBEL helped create national registers for individuals with neuromuscular diseases and cerebral palsy, in collaboration with international organizations (LAND, WDO, Treat NMD and GLM CPR).

- The launch of "Drama Therapy," a new initiative with excellent results after one year.
- Continuous training for the team and expert-led sessions locally and internationally, totaling 110 trainings this year.
- Revision of the ethics and child protection codes against abuse, reinforcing the team's commitment to SESOBEL's mission.
- Advocacy efforts with Lebanese schools, associations, and international NGOs for state dues, though no tangible results have been achieved yet.
- Implementation of new software to meet modern accounting, production, and marketing needs.
- Revision of SESOBEL's strategic plan, covering children, social action, resource development, rehabilitation, environment, and awareness.
- Organization of the "Dignity in Movement" conference, co-hosted with ICPS and the Lebanese Pediatric Society, which attracted 300 participants and was a major success.

**In conclusion**, more children referred to SESOBEL have moderate to severe disabilities, requiring specialized care, tailored approaches, and highly trained staff. Additionally, parents need ongoing support, guidance, and training, all of which come at a high cost. Sadly, during this crisis, children with disabilities and their families have not been a priority in Lebanon. As our founder Yvonne Chami aptly pointed out, this reflects the perception of many in our society: "They are not worth it to be worth the cost". This has led to a significant drop in resources, causing our financial difficulties.

I extend my heartfelt thanks to all individuals, companies, foundations, associations, and friends—including those in France, Canada, the United States, Australia, Ireland, and the UAE—for their invaluable support.

Your trust and generosity give us the strength to continue this daily struggle together.



**Fadia Safi**  
President and CEO

## OUR MISSION

A non-governmental organization founded in 1976.  
Registered at the Ministry of Interior under No. 42S.I.  
State-approved under decree No. 89/371.

SESOBEL takes all possible steps to implement a coherent and monitored service of assisting children with **moderate to severe disabilities** and to accompany their families as partners in facing life's challenges, and works equally hard with all elements of society for them to recognize the value, dignity, & respect for children with disabilities.



*For "shared blueprint for peace and prosperity for the people and the planet, now and into the future",*

*we follow 4 of the 17 interlinked Sustainable Development Goals by the United Nation.*

## OUR BENEFICIARIES

Our beneficiaries now have moderate to severe disabilities

Motor  
Disability

272

Intellectual  
Disability

223

Autism  
Spectrum  
Disorder

116

Learning  
Difficulties

293

Other  
(Non- Criteria)

205

1,109

**CHILDREN AND YOUTH WITH DISABILITY** from 1,051 FAMILIES  
have been covered by SESOBEL programs.

# FAMILY RECEPTION SERVICE

THIS YEAR, OUR D.A.R (DIAGNOSIS, ACCOMPANIMENT & REHABILITATION) CENTER WELCOMED:



99 New Families



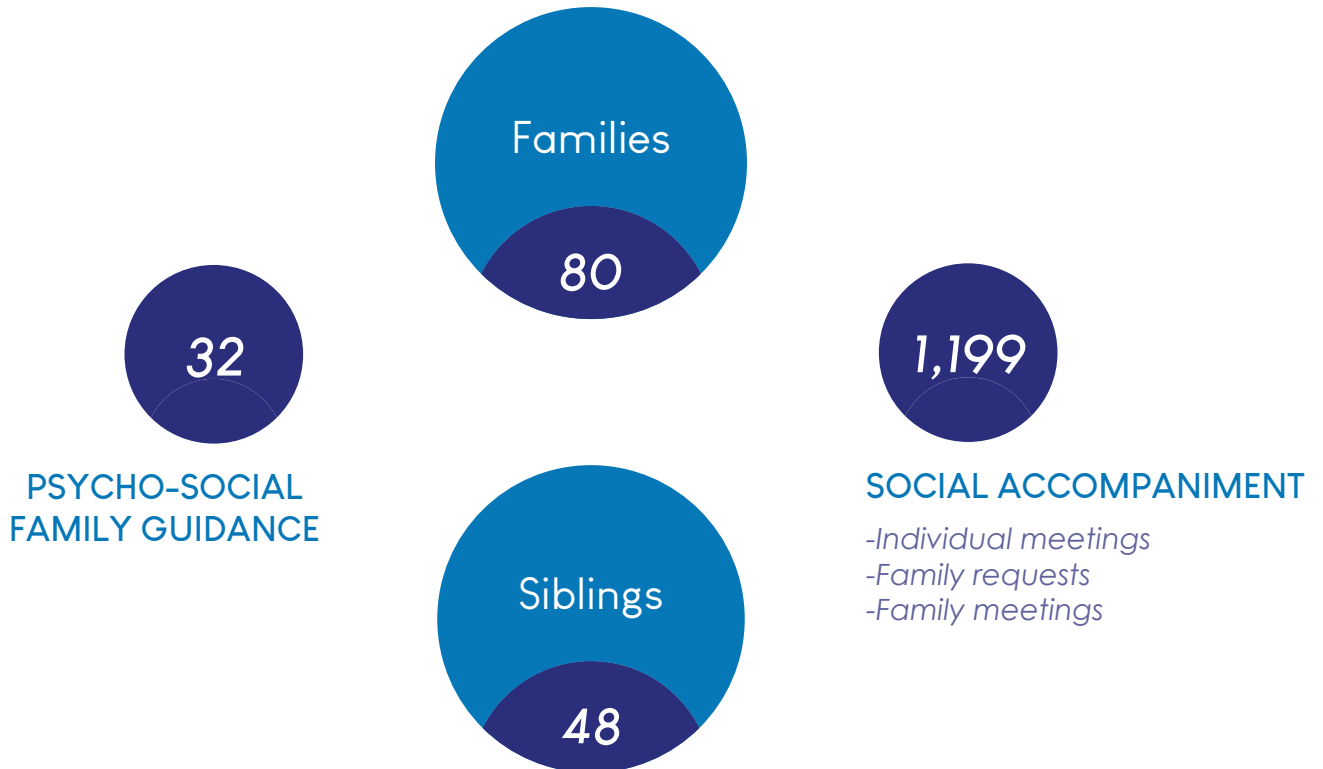
103 New Children

(Diagnosis, Consultations, Assessments, Medical & Rehabilitation care)

# SOCIAL SERVICE

Family is the main partner in the child's journey. For a better family life and for the child's well-being, SESOBEL's social intervention takes a holistic approach and aims to develop parenting skills, strengthen family autonomy, and raise awareness within the community.

THE SOCIAL DEPARTMENT ACCOMPANIED:



We mobilize the siblings to defend the cause, act as an agent of change in the society, acknowledge their role, and live in harmony (10 sibling support sessions & a summer camp).

# EDUCATIONAL PROGRAM

THE EDUCATIONAL PROGRAM WELCOMES:



EARLY STIMULATION

26

MOTOR DISABILITY

31

INTELLECTUAL DISABILITY

45

POLYHANDICAP & SEVERE  
INTELLECTUAL DISABILITY

33

AUTISM SPECTRUM DISORDER

30

## SCHOOL INCLUSION

The School Inclusion Program, pioneer program in Lebanon since 2006 in collaboration with the Ministry of Education and Higher Education MEHE, welcomed 14 CHILDREN WITH DISABILITIES at the Jezzine Public School in southern Lebanon:



## MEDICAL AND REHABILITATION PROGRAM



were involved in the development and implementation of the therapeutic plan of the child.

15,757

### SERVICES PROVIDED:

495	ASSESSMENTS	4	SURGERIES
14,200	TREATMENTS	428	CONSULTATIONS
231	ASSISTIVE TECHNOLOGY AIDS	301	PARENTAL GUIDANCES
98	MEDICAL EXAMS		

## OUTPATIENT SERVICES

Our goal is to serve more people with disabilities all over Lebanon and meet their specific needs. We collaborated with different specialists and agreements were established with a network of educators and therapists of different specializations.

36,092

### SERVICES PROVIDED:



17	ASSESSMENTS
4	CONSULTATIONS
1	MEDICAL EXAM
76	EDUCATION SESSIONS
83	ASSISTIVE TECHNOLOGY AIDS
35,911	REHABILITATION SESSIONS

# ADULT PROGRAMS

VOCATIONAL &  
REHABILITATION  
PROGRAM

CENTER FOR  
SOCIALIZATION  
& SUPPORT

A quality support for adults with disabilities in respect of their age, their dignity, their impairment and their deficiency. The adult programs offer a diverse range of recreational, expressive, personalized, and collective support. They aim at ensuring the well-being of our youth by providing:

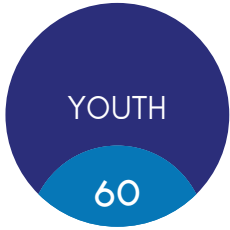
DAILY ACTIVITIES  
LEISURE ACTIVITIES  
INDIVIDUAL AND GROUP SUPPORT  
MEDICAL CARE & REHABILITATION  
SOCIAL SUPPORT  
PHYSICAL WELL-BEING AND SENSORY-EMOTIONAL COMMUNICATION  
PARENTAL GUIDANCE AND FOLLOW-UP





## VOCATIONAL AND REHABILITATION PROGRAM

The VRP provides a safe work environment, where 60 youth are involved in professional activities that match their capacities, developing self-independence that guides them to a better integration in society.



*between the ages of 20 & 54, work at the various SESOBEL workshops: (Each youth can join more than a workshop).*

Recycling: 8  
Prepress: 3  
Assistant Educator: 4  
Photography: 1  
Chocolate/ Biscuits: 11  
Assistive Technology: 1  
Kitchen: 2  
Beads: 8

Sewing: 2  
Painting: 3  
Secretariat: 2  
Laundry: 2  
Land Products: 11  
Copy Center: 2

## CENTER FOR SOCIALIZATION & SUPPORT

The CSS welcomes youth and adults from the age of 13 with heavy and severe motor or intellectual disability, as well as youth with heavy autism spectrum disorder not associated with a behavioral disorder.



were accompanied  
in different activities



- Physical Well-Being
- Sensory-Emotional Communication
- Music Therapy
- Eco-Friendly Environment
- Handyman's Creativity
- Leisure-Discovery TV

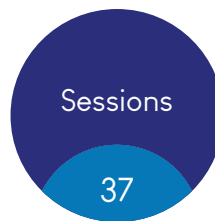
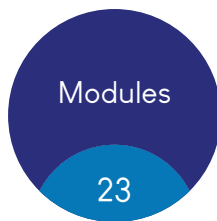
- Personal Autonomy
- Gathering Area "Kahwet El Ezez"
- Existential Accompaniment "Sons of God"
- Kitchen Workshop "Starred Chefs"

# CONTINUOUS TRAINING CENTER FOR RESEARCH & DEVELOPMENT

Our main objective is to improve the intervention and the expertise of professionals working with children with disabilities.

## A) TRAINING ORGANIZED BY SESOBEL

### ◆ Intra-Muros



### ◆ Interventions

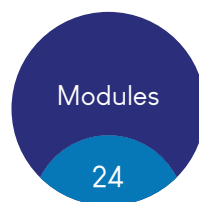


### ◆ Webinars



## B) TRAINING FOR THE PROFESSIONALS OF SESOBEL

### ◆ Extra- Muros



### ◆ Congress and Seminars



France and Belgium

## INNOVATIONS

- 1 Lebanese National Register of People with Cerebral Palsy: An initiative to create and manage individuals affected by Cerebral Palsy. This register will assist us in national and international research.
- 2 Collaboration with Sharjah City for Humanitarian Services (SCHS) in the fields of basal stimulation and adaptive sports.
- 3 SESOBEL is now a member of Treat-NMD, a global organization that brings together a network of leading specialists, patient groups, and industry representatives to promote best practices within the neuromuscular community.
- 4 SESOBEL's Continuous Training Center has received official recognition from the Ministry of Education and Higher Education. The certifications issued to participants are now officially acknowledged.

## ACHIEVEMENTS

The International Scientific Conference "Theory and Practice in Adapted Physical Education" organized in Sharjah - UAE in March 2024, aimed to highlight sports and physical activities for individuals with special needs. It shed light on the educational, psychological, and health aspects of such sports.

SESOBEL, represented by Ms. Joelle Ouba- sports teacher- and Ms. Elissa Harik held the session "We are capable, be the change" showcasing adapted sports and athletic activities, detailing the positive impact of these sports. The testimony of Elissa was inspiring.



## OUR PRODUCTS

We are "THE GOOD FAMILY".

We are a family joined by dedication. We are a family gathered by love. We are a family united by the will to make things better. You are a part of our family for supporting us for so long and continue to do so.



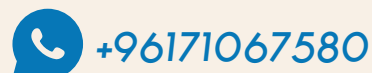
### FIND OUR SHOPS:

JBEIL - DBAYEH - JEZZINE - ACHRAFIEH- ZOUK MIKAEL -  
AIN EL RIHANI

### FIND US ABROAD:

Dubai: Min Baladi - France: Le Doukane -  
WorldWide delivery: Lebanese Signature

*Also available on Toters*



## Cerebral Palsy Symposium – October 2023



SESOBEL organized a symposium on Cerebral Palsy titled "DIGNITY IN MOVEMENT - NEW HORIZON" in collaboration with the International Cerebral Palsy Society (ICPS), La Fondation Motrice France, the SFERHE association, and the Lebanese Pediatric Association.

Experienced Lebanese speakers joined internationally renowned experts to present the latest advancements and researches. They covered all aspects of Cerebral Palsy, including medical, educational, and rehabilitation fields, social and psychological aspects, assistive technology, and the challenges of inclusion.

## World Wheelchair Day – March 1st, 2024



To celebrate this day, SESOBEL organized activities to raise awareness and educate employees by engaging them in:

- 1 Discussions about different types of wheelchairs, seating, types of cushions, and World Health Organization recommendations.
- 2 Interactive sessions on how to properly use a wheelchair and mobility rules.
- 3 Sports activities to promote active lifestyles.
- 4 Short trips in wheelchairs to understand environmental challenges.

The participants shared their personal experiences and challenges about using a wheelchair in non-adapted infrastructure places.

## Olympic and Paralympic Day – March 2024



SESOBEL participated in "Live Together an Olympic and Paralympic Day" event with the Agence pour l'Enseignement Français à l'Étranger- AEFÉ, and held adapted sports sessions and a wheelchair handling session. Raising awareness about disability while promoting inclusion, accessibility, and the rights of children and youth with disabilities were the aim of the day.

## United Steps for Autism, Earth and Water – April 2024



In April, the month of Autism Awareness, SESOBEL organized a walk in the Baskenta meadow. We visited St. Joseph Church in Baskenta and planted in the meadow three pine trees symbolizing Lebanon, SESOBEL, and Autism.

## Drama Therapy – April 2024



Drama therapy is introduced at the Autism Spectrum Disorder unit. Drama therapy is a form of psychotherapy that uses theater, dramatic play, and creative expression to help individuals explore, understand, and resolve emotional and psychological problems. SESOBEL's ultimate goal is to provide its children and youth with suitable means of expression.



# FLASH INFO

## Every Drop Counts – October to June 2024



“Every drop counts”, a project tackling Water Sanitation & Conservation - WSC aligning with the SDG -13 climate action. This collaboration brings together the Mounzer Foundation, the U.S. Agency for International Development (USAID), and SESOBEL.

The main objectives of the project are:

- 1 Increasing awareness and knowledge about water conservation and sanitation management among SESOBEL’s children and youth as well as students from 5 schools through educational awareness sessions conducted by SESOBEL’s youth.
- 2 Conserve water to achieve a positive impact on the community.

## Night to Shine – May 2024



"Skild" Center organized the *Night to Shine* event to honor individuals with special needs. Six youth from SESOBEL participated in this event. They were welcomed and accompanied along the red carpet by media, actors, and singers, to be crowned on stage as kings & queens. An Evening to remember!

## SESOBEL Choir



### Bkerkeh Mass

*"Yes to living together!"*

Invited by Ms. Dalia Frayfer, SESOBEL choir served the first mass of the “Pastoral Care for people with disabilities” at Bkerkeh.



### End-year mass at “Jardin des Anges” Nursery

The performance of our youth was exceptional!

## TESTIMONIES

### CLARITA YOUNES

*Volunteer and daughter of a member of the educational department at SESOBEL*

“...The fulfillment and serenity I feel in helping these children are the most beautiful feelings I have ever experienced in my life. Indeed, we believe we are supporting them with our presence, but in fact, we are dazzled by their daily courage, their inner joy that reflects on their faces, and their contagious smiles...”

### Maribelle Béaini (13 ans)

*Sister of Jean-Paul*

“This summer camp helped me learn a lot of things, like how to communicate with the outer world, making me feel more comfortable with meeting new people and to not be afraid to share my own opinion in a conversation even if it's different from the others.

It also informed me about lots of new things, made me have more ideas in mind about SESOBEL and the cases that it helps.

Moreover, I had a lot of fun there, met new people, made new friends and socialized a lot ...”

## SOCIAL IMPACT



**Families are partners and are highly motivated.**



**Youth are better integrated into society.**



**Society changed the way of seeing the difference & the disability.**



**The difference became the foundation of the "living together" in complementarity.**

A community built on LOVE and ACCEPTANCE



# PEOPLE WHO MAKE IT HAPPEN

MRS. FADIA SAFI  
CEO

GENERAL ASSEMBLY

48

BOARD OF TRUSTEES

6

BOARD MEMBERS

8

COUNCELORS

16

ETHICS COMMITTEE

4

SKILLED DOCTORS

49

SUPPORT COMMITTEES

36

VOLUNTEERS

147

SKILLED TEAM

222

THERAPISTS

37

TRAINEES

125

SEASONAL WORKERS

17

MOTHERS

6

REMUNERATED YOUTH

20

PARTNERS

>50

CLIENTS

>1000

## INTERNATIONAL ANTENNAS

AMERICAN FRIENDS OF SESOBEL

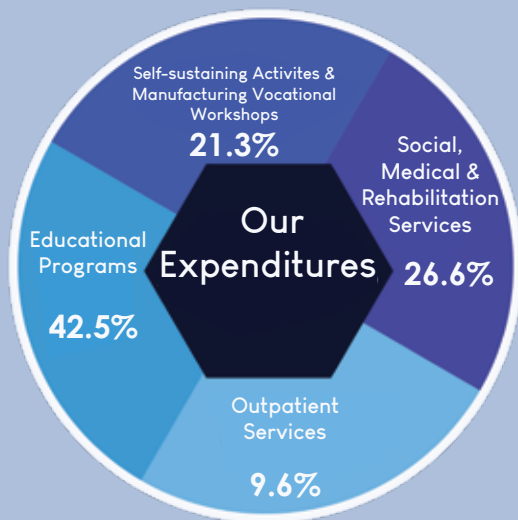
FONDATION LCF

LES AMIS DE SESOBEL FRANCE

AUSTRALIAN FRIENDS OF SESOBEL

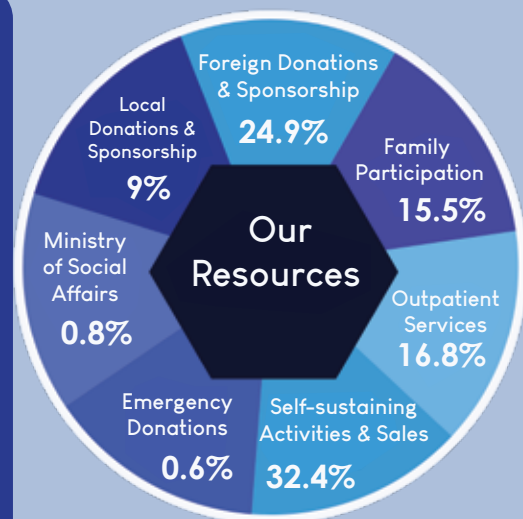
## OUR CHALLENGES

- 1 *Our beneficiaries have moderate to severe disabilities and require high expenses for specialized care, including special education, rehabilitation, medical care, assistive technology, specialized professionals and support services.*
- 2 *Mission-oriented jobs are no longer appealing to the new generation.*
- 3 *Lack of Support from the Ministry of Social Affairs.*
- 4 *Decrease in local and foreign donations.*
- 5 *Difficulty to recruit new staff because of low salaries.*
- 6 *Unbearable cost of living, including high medical service fees and reduced CNSS coverage, compels us to assist employees with their insurance payments.*
- 7 *Cost-cutting measures, such as reducing the workweek to 3 days, have been implemented. However, resuming a 5-day workweek is crucial and would require additional income equivalent to one-third of the current annual budget.*



**In-kind donations,** ranging from media coverage, volunteering, food donations, operational support, recycling sales, and expert services to medication, medical care, and project implementation, are the lifeblood of SESOBEL's mission and are estimated at

**876 838 USD**



**“Our children are not worth it to be worth the cost”**

This statement is a harsh reality we refuse to accept.

Every child deserves a future filled with hope, care, and opportunities. At SESOBEL, we are committed to changing this narrative, but we need your help.

Donate today and be part of a movement that values every child's potential. Together, we can turn this statement around and give our children the future they deserve.

# Your help is Vital

It allows SESOBEL to overcome its hardship and cater to the needs of more than 1000 children and youth with disability, and preserve the unity of their families.

## DONATE

- T: +961 9 235 435 / AIN EL RIHANI
- ONLINE: [WWW.SESOBEL.ORG/DONATE](http://WWW.SESOBEL.ORG/DONATE)
- CHECK
- BANK TRANSFER:
  1. BANK AUDI SAL - LEBANON - ACCOUNT NUMBER: : 071753
  2. BANQUE LIBANO-FRANÇAISE - LEBANON - ACCOUNT NUMBER: : 6261519

## DONATE SERVICES / IN-KIND

T: : 00961 9 235 435 / AIN EL RIHANI

## BUY OUR PRODUCTS

- SHOPS: LOCATION AVAILABLE ON GOOGLE MAPS
- DOWNLOAD SESOBEL APPLICATION: ANDROID / iOS
- WHATSAPP SHOP NUMBER: +961 71 067 580

## VOLUNTEER

EMAIL: [VOLUNTEER@SESOBEL.ORG](mailto:VOLUNTEER@SESOBEL.ORG)

## CONTACT US

ST. 11 - P.O BOX: 551 / ZOUK MIKAEL, LEBANON  
[INFO@SESOBEL.ORG](mailto:INFO@SESOBEL.ORG) / [WWW.SESOBEL.ORG/](http://WWW.SESOBEL.ORG/) +961 9 235 435



**Cabinet Antoine Haddad**  
Comptabilité et Expertise

مكتب أنطوان حداد  
محاسبة وتدقيق



SESOBEL treasures its autonomy and is not affiliated to any religious nor political entity.

SESOBEL is engaged to abide by rigorous and transparent management practices: the finances of SESOBEL are regularly monitored by two auditing firms, the international **Ernst & Young** and the **Cabinet Antoine Haddad Lebanon**.